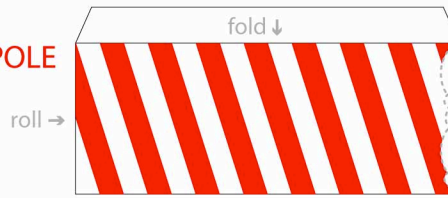


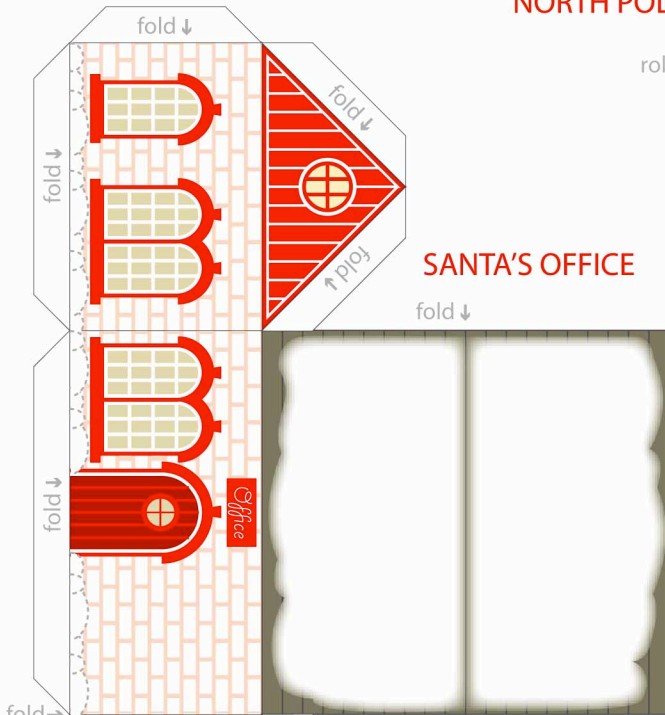
Santa's North Pole

© 2010 PaperToys.com

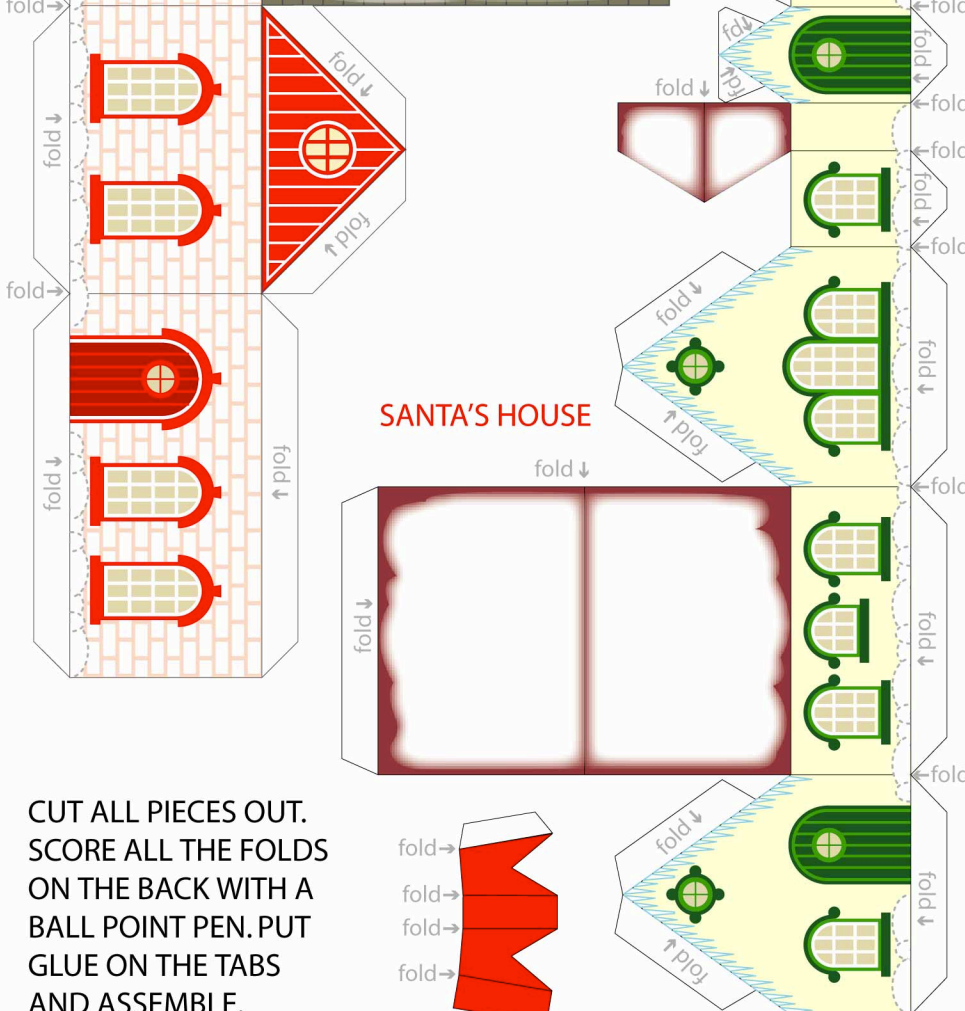
NORTH POLE



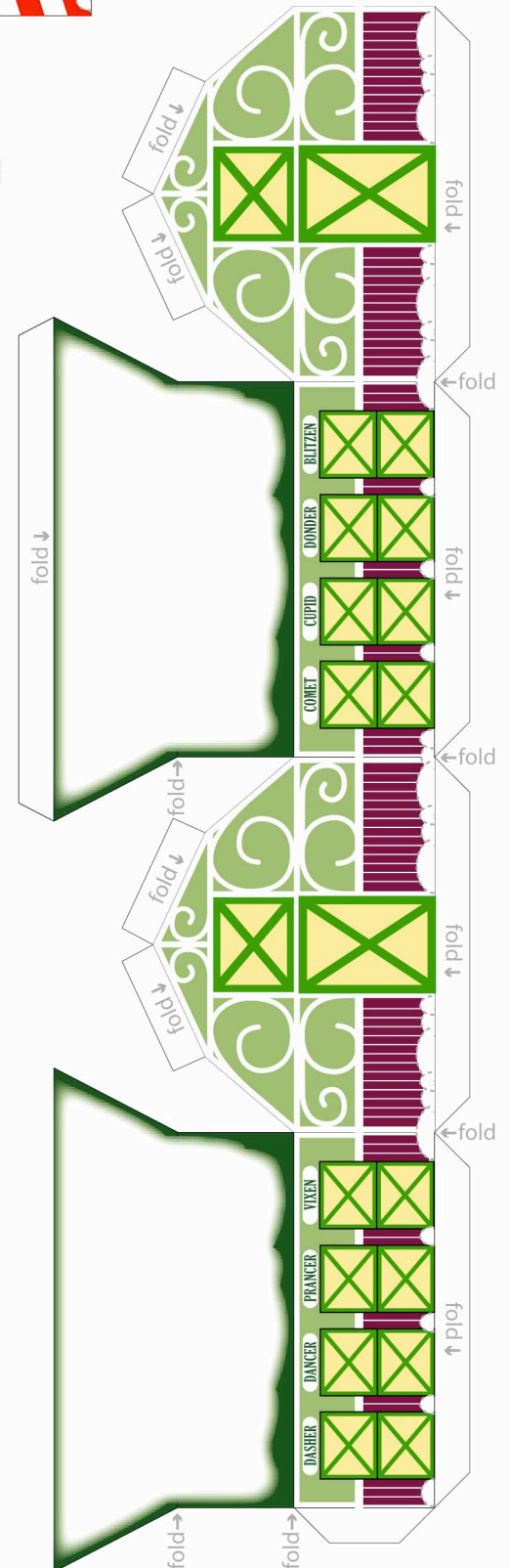
SANTA'S OFFICE



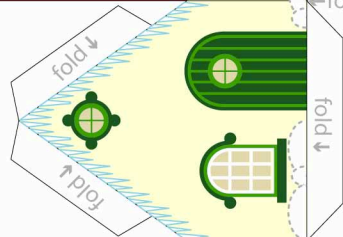
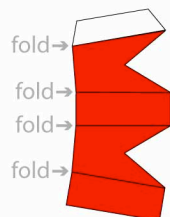
SANTA'S HOUSE

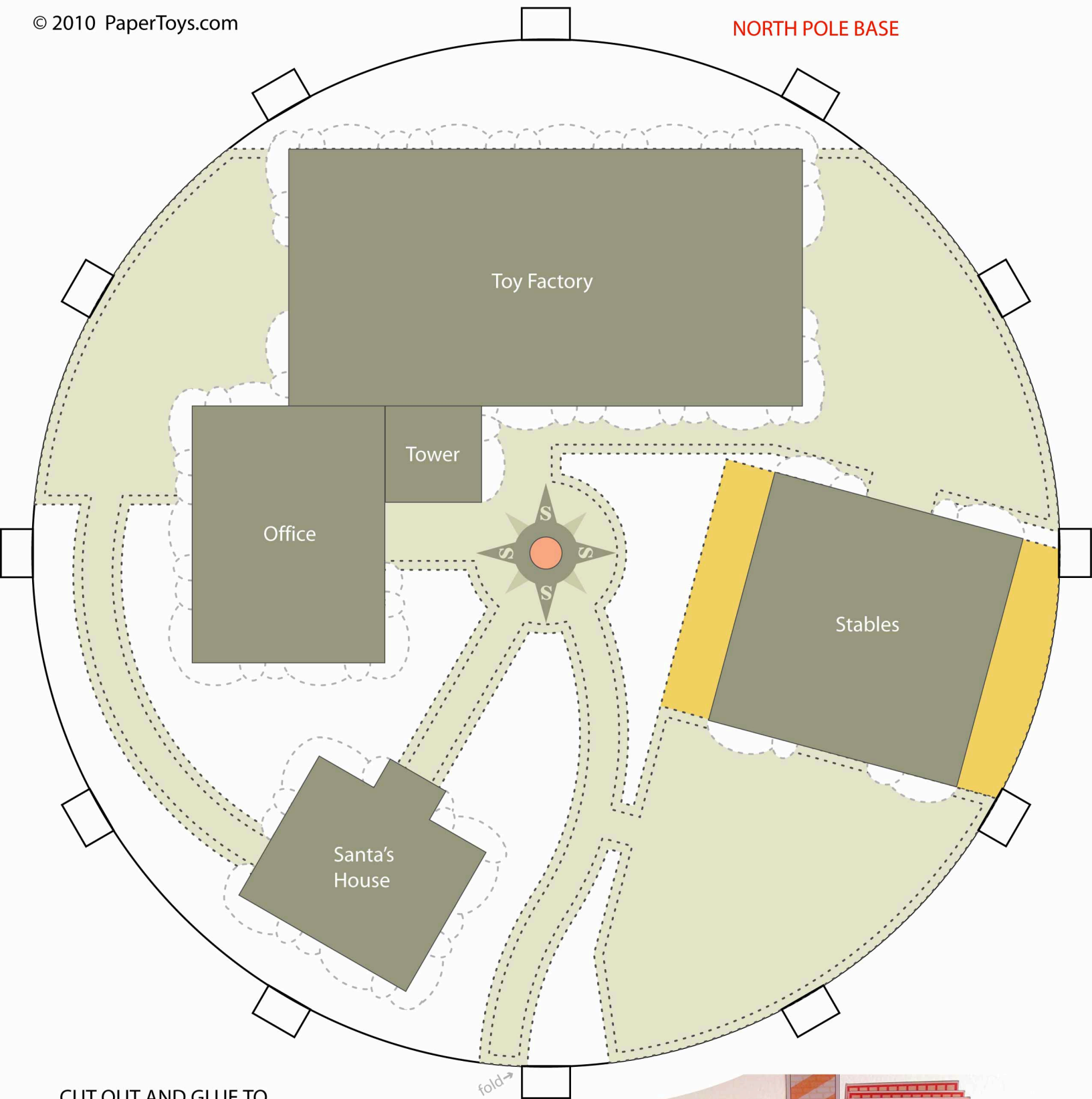


REINDEER BARN



CUT ALL PIECES OUT.
SCORE ALL THE FOLDS
ON THE BACK WITH A
BALL POINT PEN. PUT
GLUE ON THE TABS
AND ASSEMBLE.





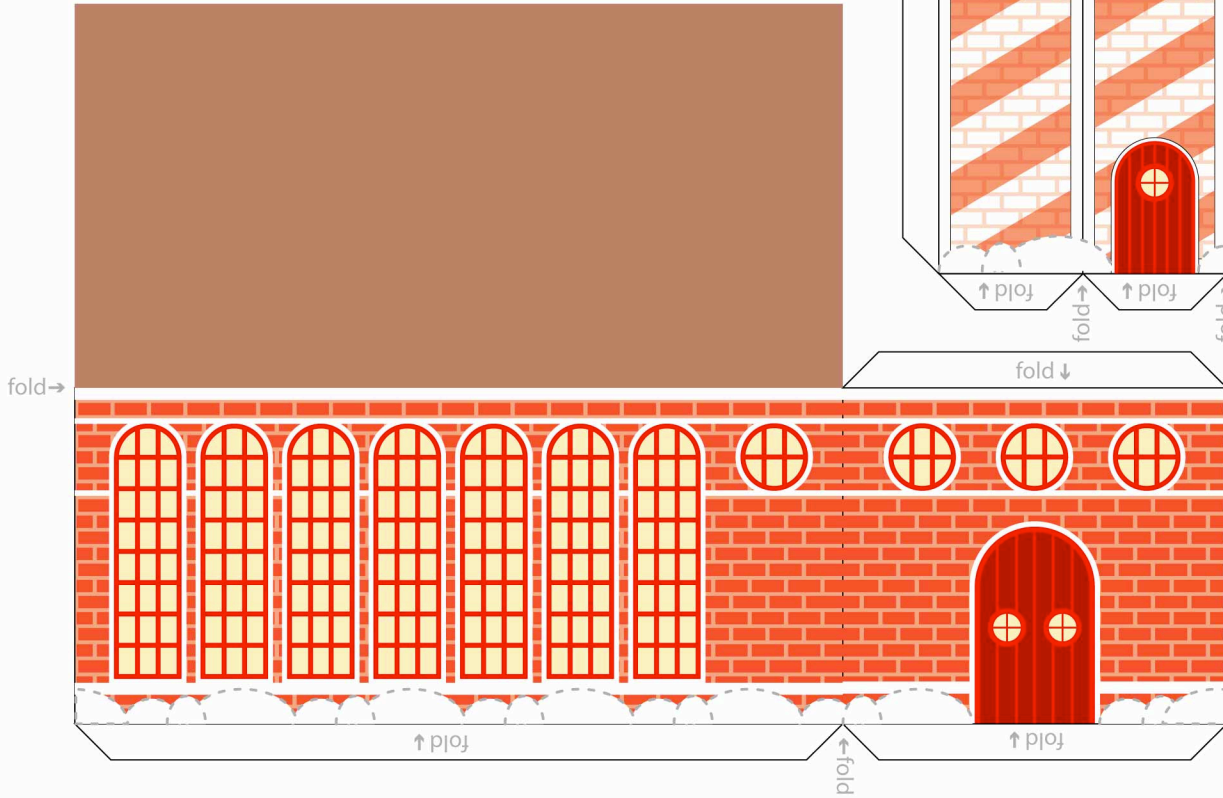
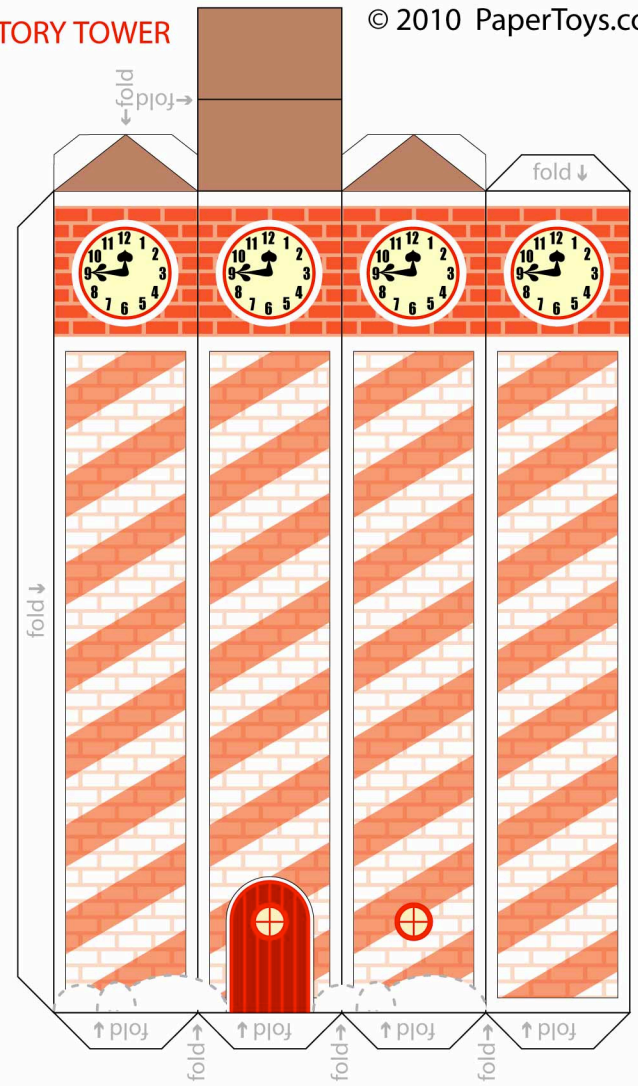
CUT OUT AND GLUE TO
A CARDBOARD BASE -EXCEPT
FOR THE TABS. FOLD THEM UP.
GLUE THE WALL WITH THE
TREES TO THE OUTSIDE OF
THE TABS.



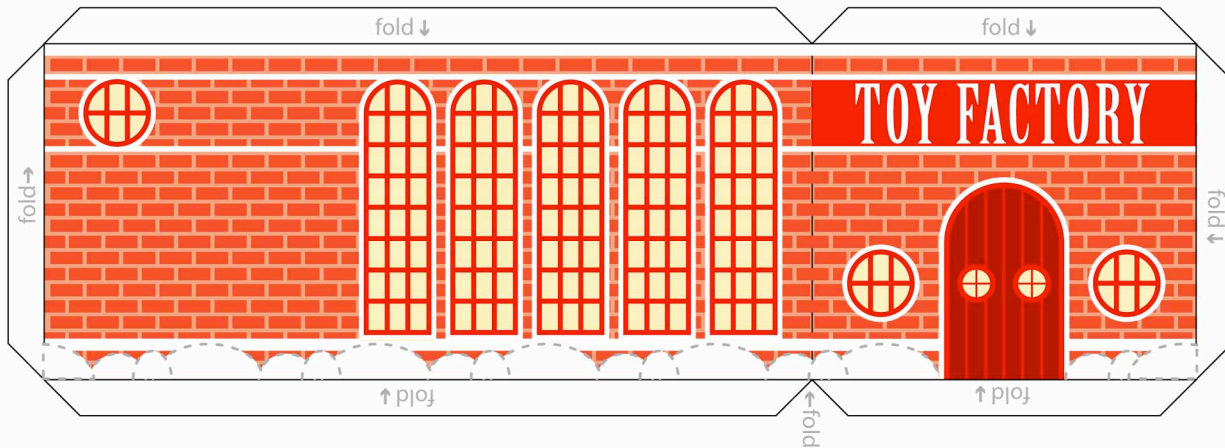


TOY FACTORY TOWER

© 2010 PaperToys.com

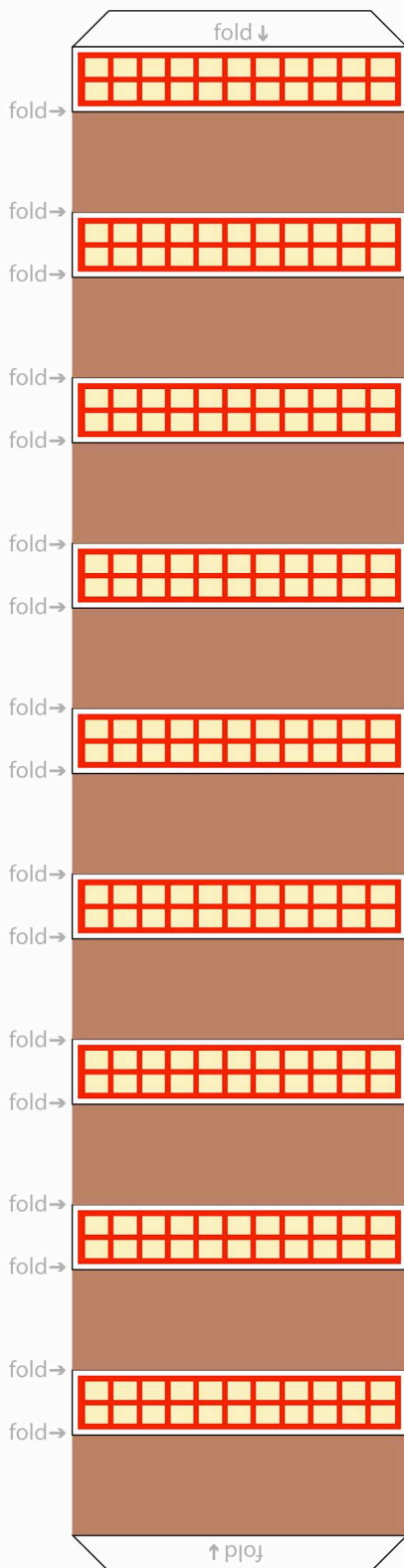


TOY FACTORY BACK



TOY FACTORY FRONT

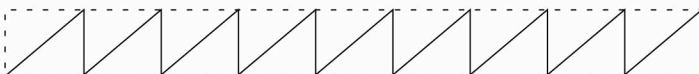
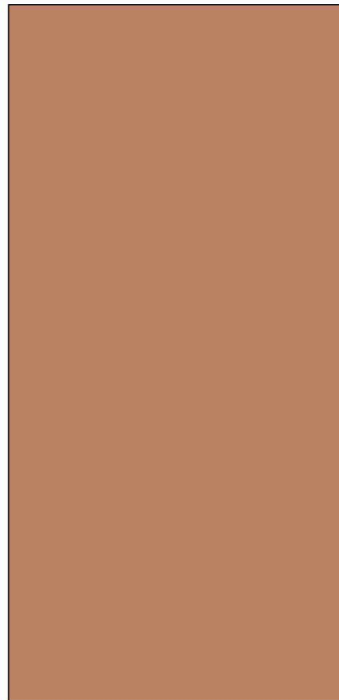
TOY FACTORY SKYLIGHT



CUT ALL PIECES OUT.
SCORE ALL THE FOLDS
ON THE BACK WITH A
BALL POINT PEN. PUT
GLUE ON THE TABS
AND ASSEMBLE.

FOLD THE SKYLIGHT
IN A ZIG-ZAG PATTERN.
GLUE TO THE SKYLIGHT
BASE. THE 2 END TABS
ON THIS PAGE FOLD
AND GLUE UNDER THE
SKYLIGHT BASE.

LINE UP THE TREES ON
THE WALL WITH THE TABS
ON THE NORTH POLE BASE.

ROOF SKYLIGHT
BASE

TOY FACTORY SKYLIGHT - SIDE VIEW

NORTH POLE WALL

